



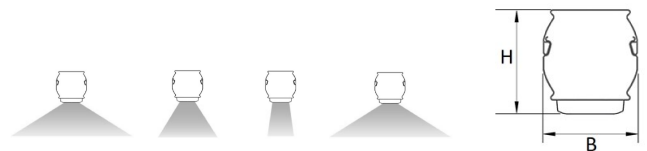
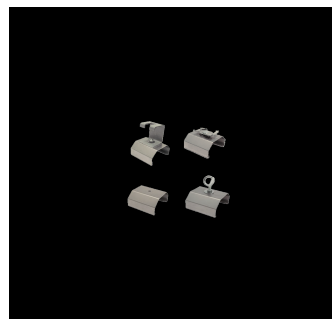
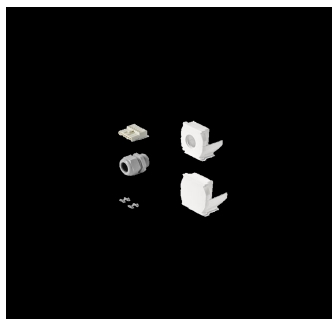
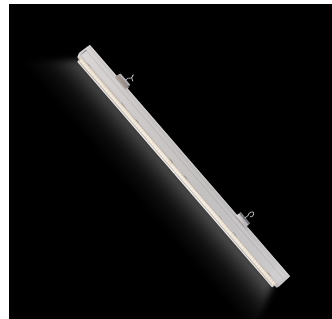
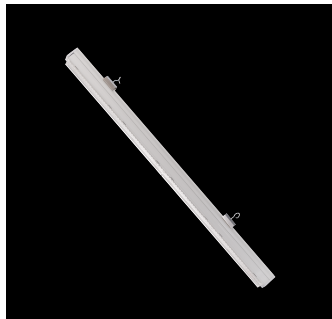
Up to 205 lm/W L80 B10 100.000h

Instructions of use and Declaration of conformity:
<https://elmromania.ro/produse/industrial-parcari-depozite/tls-trunking-light-system/>

Standard:

Options:

LED	IP50	IP20	DIM
IK03	220 - 240V 50/60Hz	CLI	
850°	CE	RoHS compliant	
CRI80			



RAILS		COVERS		SENSOR UNITS
L3 = 3414 mm	L4 = 4552 mm	L1 = 1138 mm	L2 = 2276 mm	L1 = 1138 mm
UNITS				
L1 50% LIGHT 3500LM 1138MM	L1 100% LIGHT 7000LM 1138MM	L2 50% LIGHT 7000LM 2276MM	L2 100% LIGHT 14000LM 2276MM	

	L	W	H
TLS 1L 50%	1138	70	58
TLS 1L 100%	1138	70	58
TLS 2L 50%	2276	70	58
TLS 2L 100%	2276	70	58
COVERS 1L	1138		
COVER 2L	2276		
RAIL 3L	3414		
RAIL 4L	4552		

TYPE	CRI	CCT	SRC	Flux(lm)	Total Power(W)	Efficacy lm/W	unit /palet
TLS 1L 50% 3500LM	80	4000	1	3500	21.0	167	+10°C / +40°C
TLS 1L 100% 7000LM	80	4000	2	7000	41.0	171	+10°C / +40°C
TLS 1L 100% 1000LM	80	4000	2	10000	54.0	185	+10°C / +40°C
TLS 2L 50% 7000LM	80	4000	2	7000	40.0	175	+10°C / +40°C
TLS 2L 100% 14000LM	80	4000	4	14000	75.0	187	+10°C / +40°C
TLS 2L 100% 20000LM	80	4000	4	20000	114.0	175	+10°C / +40°C