

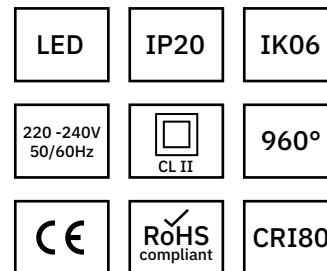
# FOCUS 90



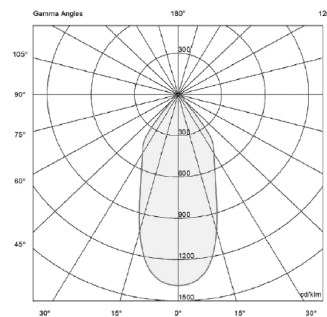
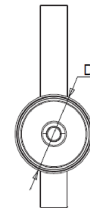
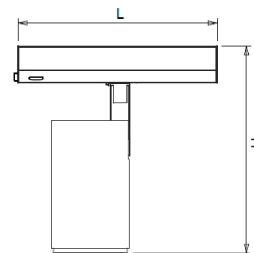
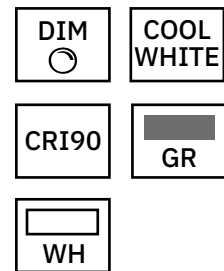
**Up to 117 lm/W**  
**L80 B10 50.000h**

Instructions of use and Declaration of conformity:  
<https://elmromania.ro/produse/office/focus-90-cri80/>

## Standard:



## Options:



	L	H
FOCUS 90	230	235

# FOCUS 90

TYPE	CRI	CCT	Flux (lm)	Total Power (W)	Efficacy lm/W	UGR <19	TA	WEIGHT kg	unit / cart	unit /palet
FOCUS90 2500/830 20°	80	3000	2500	24	104	-	-10°C / +35°C	1.00	1	180
FOCUS90 2500/840 20°	80	4000	2700	24	113	-	-10°C / +35°C	1.00	1	180
FOCUS90 3500/830 20°	80	3000	3400	34	100	-	-10°C / +35°C	1.00	1	180
FOCUS90 3500/840 20°	80	4000	3600	34	106	-	-10°C / +35°C	1.00	1	180
FOCUS90 2500/830 30°	80	3000	2700	24	113	-	-10°C / +35°C	1.00	1	180
FOCUS90 2500/840 30°	80	4000	2800	24	117	-	-10°C / +35°C	1.00	1	180
FOCUS90 3500/830 30°	80	3000	3600	34	106	-	-10°C / +35°C	1.00	1	180
FOCUS90 3500/840 30°	80	4000	3800	34	112	-	-10°C / +35°C	1.00	1	180
FOCUS90 2500/830 40°	80	3000	2500	24	104	-	-10°C / +35°C	1.00	1	180
FOCUS90 2500/840 40°	80	4000	2600	24	108	-	-10°C / +35°C	1.00	1	180
FOCUS90 3500/830 40°	80	3000	3400	34	100	-	-10°C / +35°C	1.00	1	180
FOCUS90 3500/840 40°	80	4000	3500	34	103	-	-10°C / +35°C	1.00	1	180
FOCUS90 2500/830 60°	80	3000	2500	24	104	-	-10°C / +35°C	1.00	1	180
FOCUS90 2500/840 60°	80	4000	2600	24	108	-	-10°C / +35°C	1.00	1	180
FOCUS90 3500/830 60°	80	3000	3300	34	97	-	-10°C / +35°C	1.00	1	180
FOCUS90 3500/840 60°	80	4000	3500	34	103	-	-10°C / +35°C	1.00	1	180